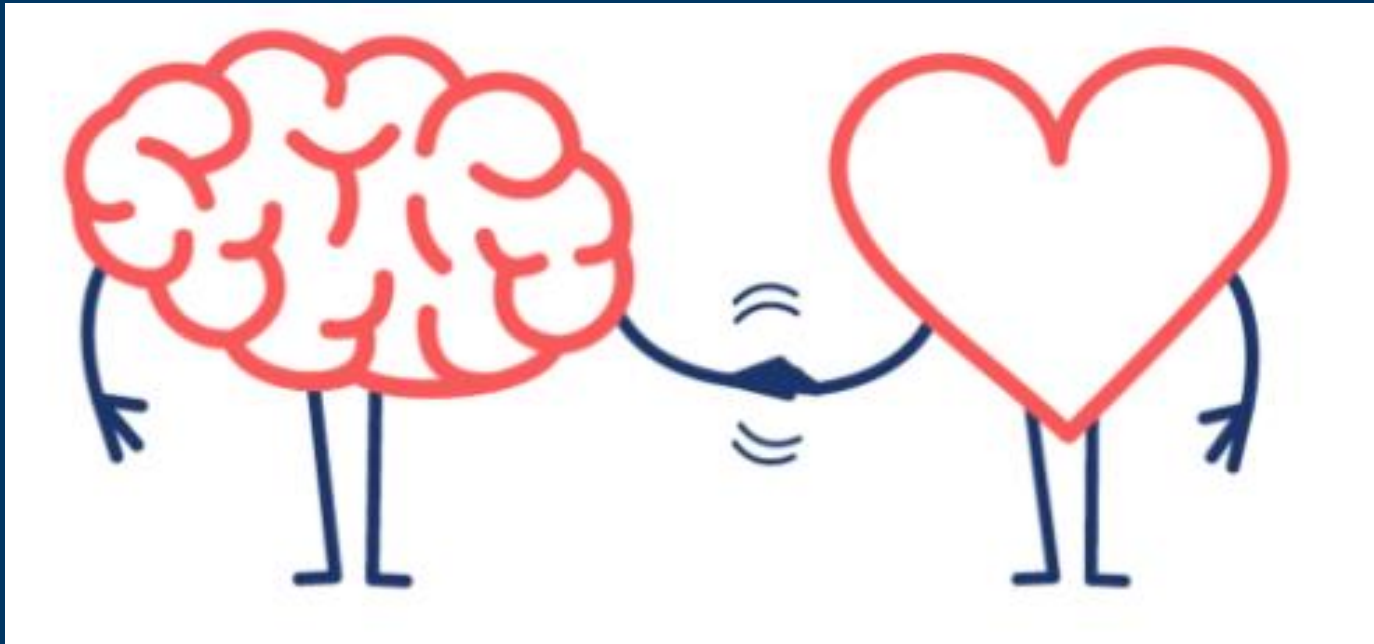


Pre-Inspection Protocol

1. Loss of life
2. Loss of personal property



Pre-Inspection Protocol

3. **Safety** of those in or around the damaged area (shoring, yellow tape)



Pre-Inspection Protocol

3. **Safety** of those in or around the damaged area (shoring, yellow tape)



Pre-Inspection Protocol

4. Protection of Evidence (cause and origin investigation)



<https://www.cfitrainer.net/>

Arc Mapping, Basic Electricity, Criminal Cases, DNA, Explosions, Fire Flow, Fire Chemistry, **Fire Scene Safety**, Physical Evidence, NFPA 921, Carcinogens and Cancer, Flashover, Vacant Buildings

What the Insurance Professional Needs to Know About Fire Investigation
Understanding the Fire Investigator's Job: A Guide for Non-Investigators



Certified Fire Investigator (IAAI-CFI)

Fire Investigation Technician (IAAI-FIT)

<https://www.firearson.com/#>



Pre-Inspection Protocol

- 5. Scope of work for an engineer**
 - a. Extent of damage**
 - b. Offer Repair Recommendations**
 - c. Give an opinion on the direction to take (Repair or Rebuild)**

So....What happened?

What is it like now?

Coordinate a safe inspection.



Pre-Inspection Protocol

6. Interview – What happened

a. What was the cause?

b. What was the fuel?

c. Was blast included?

Blast damage is way different than fire.

d. How long did it last?

e. Who is in control of the site?



Pre-Inspection Protocol

1. Loss of life
2. Loss of personal property (possessions)
3. Safety of those in or around the damage (shoring, yellow tape)
4. Protection of evidence (cause and origin)
5. Scope of work for an engineer
 - a. Define the Extent of damage
 - b. Offer Repair Recommendations
 - c. Give an opinion on the direction to take (Repair or Rebuild)
6. Interview – What happened
 - a. What was the cause?
 - b. What was the fuel?
 - c. Was blast included? Blast damage is way different than fire.
 - d. How long did it last?

